



# SERIES G2 PRODUCT DATA SHEET

MODEL	PART NUMBER	MOTOR TYPE
SG2 15-A-5.0H-10DL-WR00-MC	105550	Hydraulic 5.0 ci
SG2 15-C-5.0H-10DL-WR00-MC	105555	Hydraulic 5.0 ci
SERIAL NUMBER	INSPECTED BY	DATE

ENGINEERING DATA		
Rated Pulling Force:	15000 lbf	6804 kgf
Drum Barrel Diameter:	4 in	101.6 mm
Drum Flange Diameter:	8.24 in	209.3 mm
Drum Width:	9.95 in	252.7 mm
Evaluated Rope Diameter:	1/2 in	12.7 mm
Maximum Wire Rope Diameter:	1/2 in	12.7 mm
Minimum Wire Rope Breaking Strength:	26600 lbf	12065 kgf
Maximum Layers of Wire Rope:	3 with 1/2in rope	
Gear Train:	Planetary	
Gear Reduction:	36:1	
Mounting Bolt Size:	M12 X 1.75 Class 8.8	
Mounting Bolt Torque:	46-51 lbf-ft	63-69 Nm
Duty Cycle (per SAE J706 section 6.2):	366 ft	111.6 m
Approximate Shipping Weight:	87.7 lbf	39.8 kg
Brake Type:	Automatic Disk Brake per SAE J706 Sec. 4.2	
Sealing:	IP68/IP69K	
UV Rating:	1200 kJ/m <sup>2</sup> per ASTM G154	
Corrosion Resistance:	408 hrs per ASTM B117	
Operating Temperature:	-40°F to 158°F (-40°C to 70°C)	
Decibels:	85.5 dB	
EMC Emissions:	N/A	
EMC Immunity:	N/A	



## DESCRIPTION

SeriesG2 Hydraulic winches provide a more robust and serviceable design with a stronger gear train for increased performance. Less maintenance and less downtime means more work.

## ACCESSORIES

SeriesG2 winches represents an all-new level of modular design, customization, and versatility, no matter the application. Please visit [www.warn.com/industrial](http://www.warn.com/industrial) for all available accessories and options.

## STANDARDS COMPLIANCE

2006/42/EC - EN ISO 12100:2010, EN 60529:1992+A2:2013, EN 14492-1:2006\*  
 2014/30/EU - EN 50498:2010, ISO 7637-2:2011, CISPR 25  
 2011/65/EU - EN 63000:2018

Also complies with:  
 SAE J706

\*Conforms with exceptions

## PERFORMANCE BY LAYER

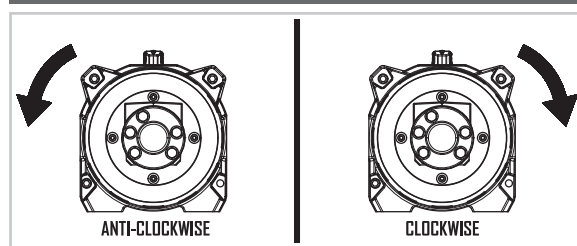
DRUM LAYER	LINE LOAD*			LINE SPEED 10 GPM		LINE SPEED 15 GPM	
	lbf	kgf	kN	ft/min	m/min	ft/min	m/min
1	15000	6804	66.7	16	4.8	24.8	7.5
2	12273	5567	54.6	19	5.9	30.3	9.2
3	10385	4710	46.2	23	7.0	35.8	10.9

\*Never exceed the Rated Pulling Force. Installation of a Rated Capacity Limiter is recommended

## FIRST LAYER PERFORMANCE

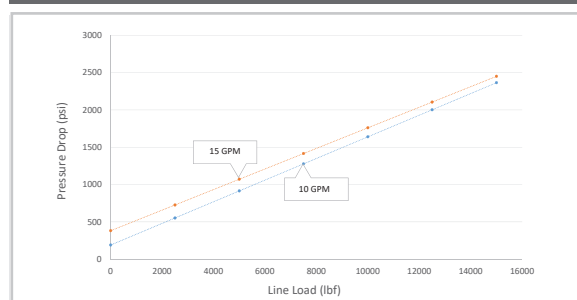
LINE LOAD		PRESSURE DROP AT 10 GPM		PRESSURE DROP AT 15 GPM		DUTY CYCLE
lbf	kgf	psi	BAR	psi	BAR	min/10min
0	0	189	13.0	381	26.3	N/A
2500	1134	552	38.0	726	50.0	N/A
5000	2268	914	63.0	1071	73.8	N/A
7000	3402	1277	88.0	1415	97.6	N/A
10000	4536	1639	113.0	1760	121.4	N/A
12500	5670	2002	138.0	2105	145.1	N/A
15000	6804	2364	163.0	2450	168.9	N/A

## DRUM ROTATION



As viewed from motor end

## FIRST LAYER PERFORMANCE





# SERIES G2 PRODUCT DATA SHEET

MODEL	PART NUMBER	MOTOR TYPE
-------	-------------	------------

SG2 15-A-5.0H-10DL-WR00-MC	105550	Hydraulic 5.0 ci
SG2 15-C-5.0H-10DL-WR00-MC	105555	Hydraulic 5.0 ci

## DRUM LAYER CAPACITY PER EVALUATED ROPE DIAMETER

DRUM LAYER	DRUM LENGTH							
	6.5"		8"		10"		12.5"	
	ft	m	ft	m	ft	m	ft	m
1	16	4.9	16	4.9	20	6.1	27	8.2
2	36	11.0	36	11.0	45	13.7	61	18.6
3	60	18.3	60	18.3	75	22.9	100	30.5

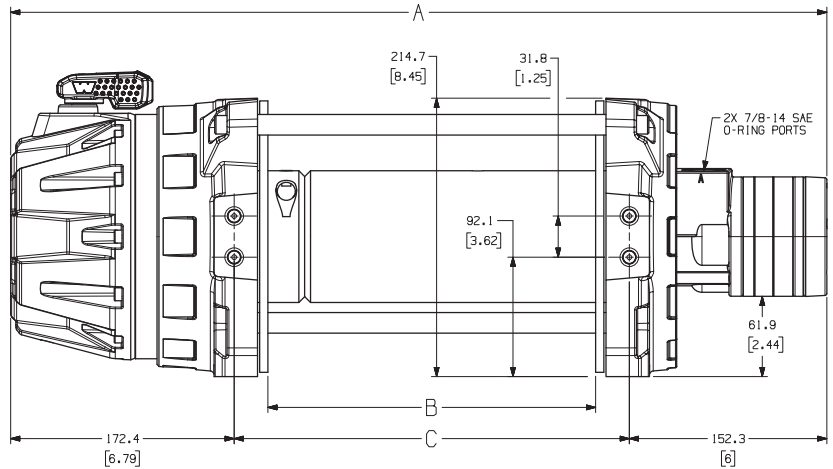
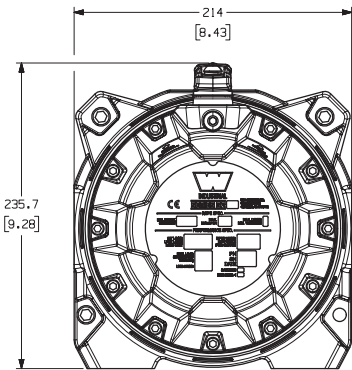
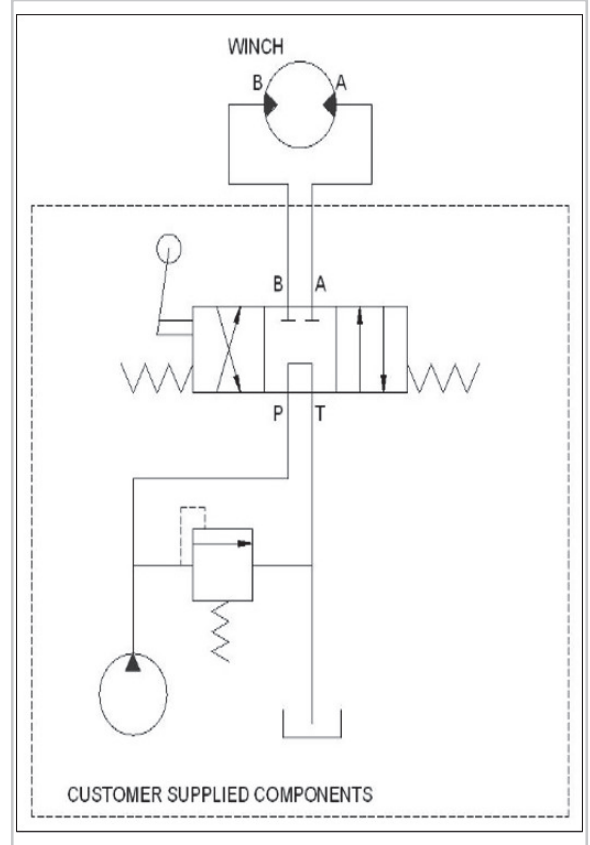
## TOTAL DRUM CAPACITY

ROPE DIAMETER	DRUM LENGTH							
	6.5"		8"		10"		12.5"	
	ft	m	ft	m	ft	m	ft	m
1/2	60	18.3	60	18.3	75	22.9	100	30.5

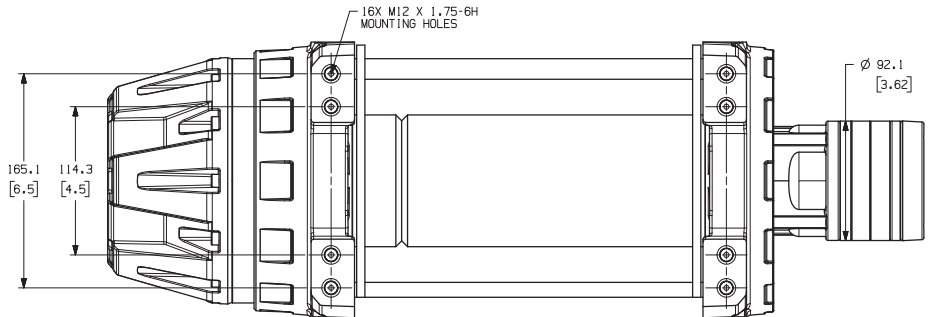
## HYDRAULIC SYSTEM SPECIFICATIONS

Maximum System Pressure:	2500 psi	172 BAR
Maximum Motor Pressure Drop:	2163 psi	141.9 BAR
Maximum Rated Input Flow:	15 GPM	57 LPM
Maximum Rated Input Speed:	757	RPM
Control Valve Type:	Tandem Center	

## CONTROL VALVE SCHEMATIC



DRUM SIZE	UNITS	A	B	C
6.5" Drum	mm	540.5	163.8	215.8
	in	21.28	6.45	8.50
8" Drum	mm	578.6	201.9	253.9
	in	22.78	7.95	10.00
10" Drum	mm	629.4	252.7	304.7
	in	24.78	9.95	12.00
12.5" Drum	mm	692.9	316.2	368.2
	in	27.28	12.45	14.50



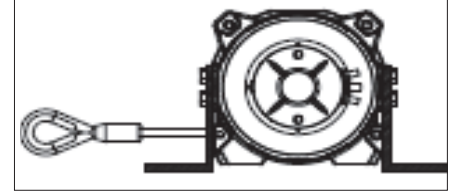
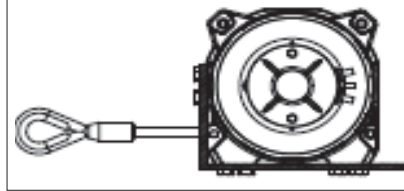
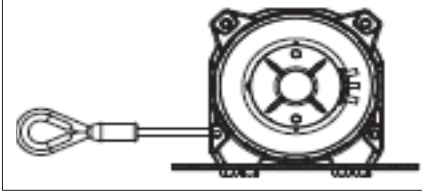


## MOUNTING CONFIGURATIONS

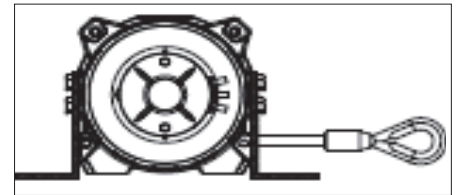
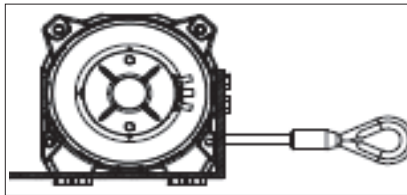
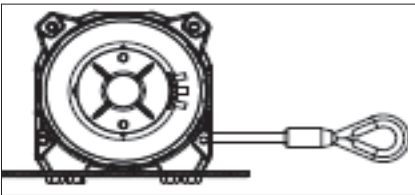
MODEL	PART NUMBER	MOTOR TYPE
SG2 15-A-5.0H-10DL-WR00-MC	105550	Hydraulic 5.0 ci
SG2 15-C-5.0H-10DL-WR00-MC	105555	Hydraulic 5.0 ci

ALL MOUNTING MUST BE OBSERVED FROM MOTOR END

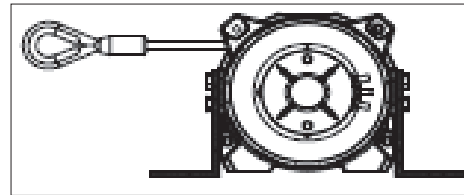
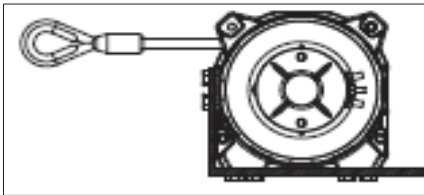
### FEET DOWN, ROPE UNDER DRUM, COMING IN FROM THE LEFT (DUL) - ANTI-CLOCKWISE ROTATION



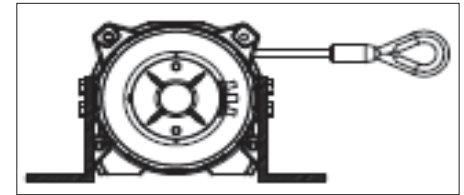
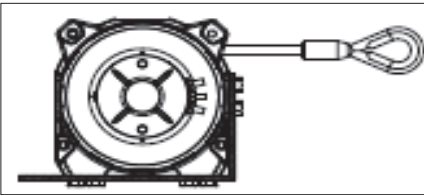
### FEET DOWN, ROPE UNDER DRUM, COMING IN FROM THE RIGHT (DUR) - CLOCKWISE ROTATION



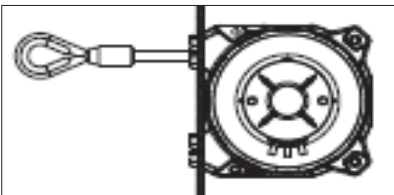
### FEET DOWN, ROPE OVER DRUM, COMING IN FROM THE LEFT (DOL) - CLOCKWISE ROTATION



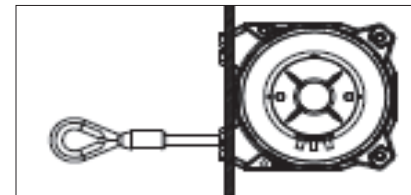
### FEET DOWN, ROPE OVER DRUM, COMING IN FROM THE RIGHT (DOR) - ANTI-CLOCKWISE ROTATION



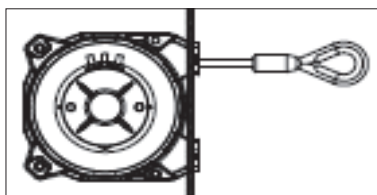
### FEET FORWARD, ROPE OVER DRUM, COMING IN FROM THE LEFT (FOL) - CLOCKWISE



### FEET FORWARD, ROPE UNDER DRUM, COMING IN FROM THE LEFT (FUL) - ANTI-CLOCKWISE



### FEET FORWARD, ROPE OVER DRUM, COMING IN FROM THE RIGHT (FOR) - ANTI-CLOCKWISE



### FEET FORWARD, ROPE UNDER DRUM, COMING IN FROM THE RIGHT (FUR) - ANTI-CLOCKWISE

